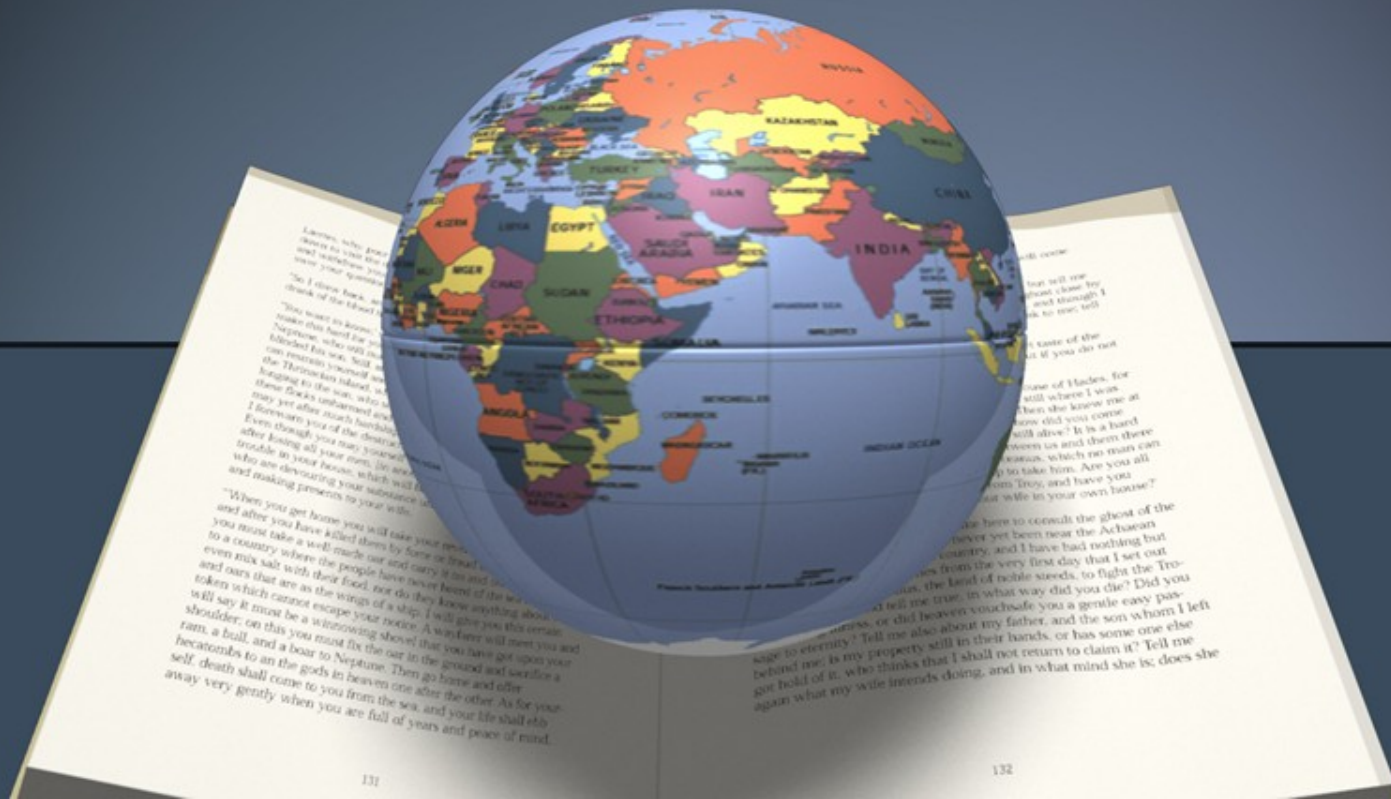


# Global Climate Change:

## An Introduction to the IPCC & the 2007 IPCC Synthesis Report



ipcc

INTERGOVERNMENTAL PANEL ON climate change



# Introduction to the IPCC

- The “IPCC” stands for the “Inter-governmental Panel on Climate Change”



World  
Meteorological  
Organization



UNEP

- The IPCC was established in 1988 by 2 branches (WMO & UNEP) of the **United Nations**



- The purpose of the IPCC is to evaluate the anthropogenic (human-induced) climate change, including its ramifications, & possible adaptations, & better yet, solutions
- The Official IPCC Website:  
<http://www.ipcc.ch/>
- Won the 2007 Nobel Peace Prize





# Who makes up the IPCC?

- **The Panel:**

**30** representatives governmental & organizational appointed from all over the world

- **Contributors:**

Contributors include people from > **130 countries**

- 2500 **scientific expert reviewers**
- > **800 contributing & >450 lead authors**

- **Requirement:**

Any scientist who participates in the IPCC assessment process **MUST** do so **WITHOUT** any type of **compensation** (monetary or otherwise)



# The Pro's & Con's of the IPCC

## Pro's:

- IPCC reports are the **most reliable** information on climate change because they represent a **consensus** of the global scientific community
- The “Boy who Cried Wolf” syndrome is prevented by the conservative nature of the IPCC reports
  - The IPCC was designed intentionally to be very conservative so as to NOT overstate or exaggerate any of the risks of Climate Change.

## Con's:

- IPCC reports are **too conservative**
  - By only reporting the “lowest common denominator” findings, they're **under-estimating** the **dangers & risks** of climate change
- **Objectivity** of the 30 **Panel** members
  - There's concern that governments will only the people they have a strong influence over.
- Reports are **Out of Date** by the time they are published
  - All the literature must be extensively peer-reviewed in order to become eligible for review by the IPCC. The most recent data included in each IPCC report is at least 2 years old.
- The “No compensation” requirement weeds out good Scientists



# The Importance of IPCC Findings



## I. Give the Facts:

- Describe the current condition of Earth
- Of what we are seeing now, what can we definitively say is due to Climate Change

## II. Develop Scenarios

## II. Make Recommendations

# I. Fact – The US emits the most CO<sub>2</sub>

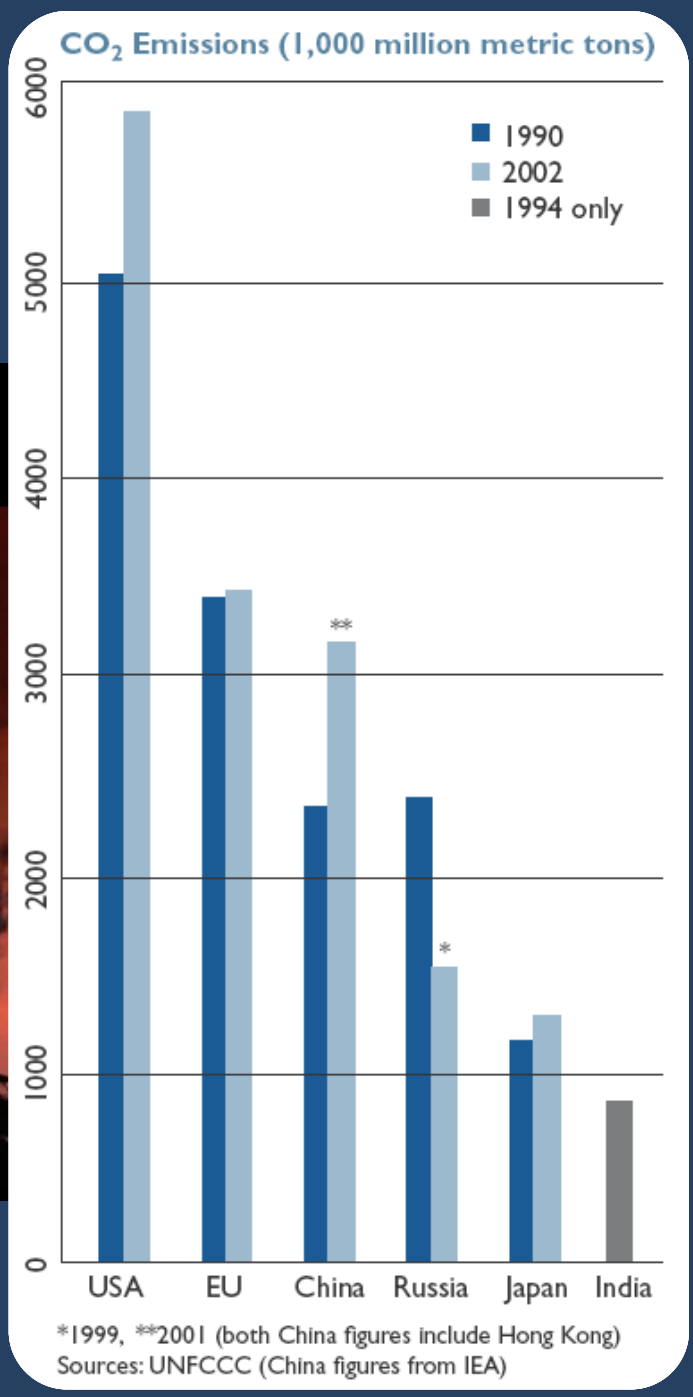
**an inconvenient truth**  
A GLOBAL **WARNING**



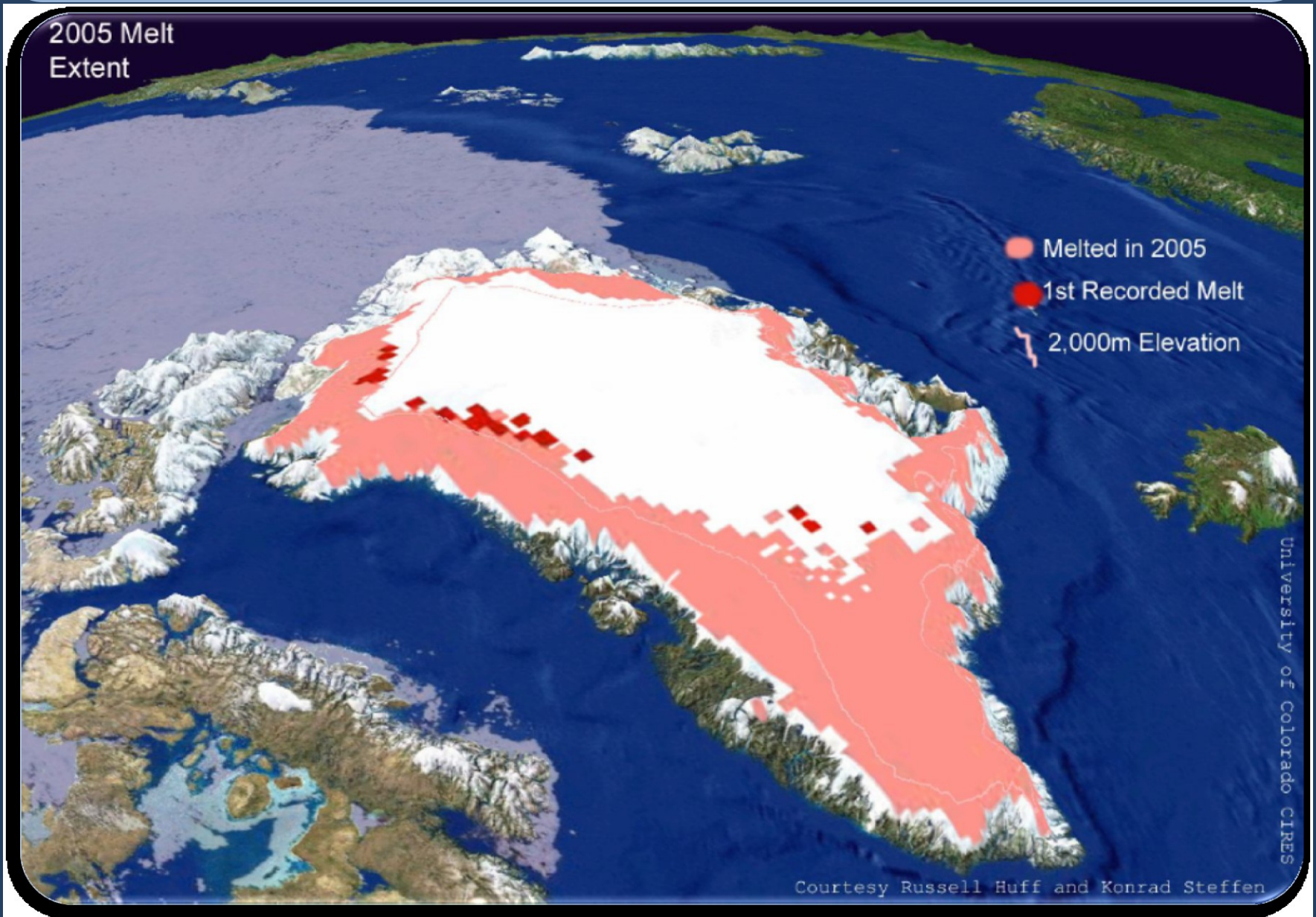
by far the most terrifying film  
you will ever see.

<http://news.bbc.co.uk/2/hi/science/nature/3143798.stm>

<http://www.climatecrisis.net/downloads/images/Desktop-6.jpg>



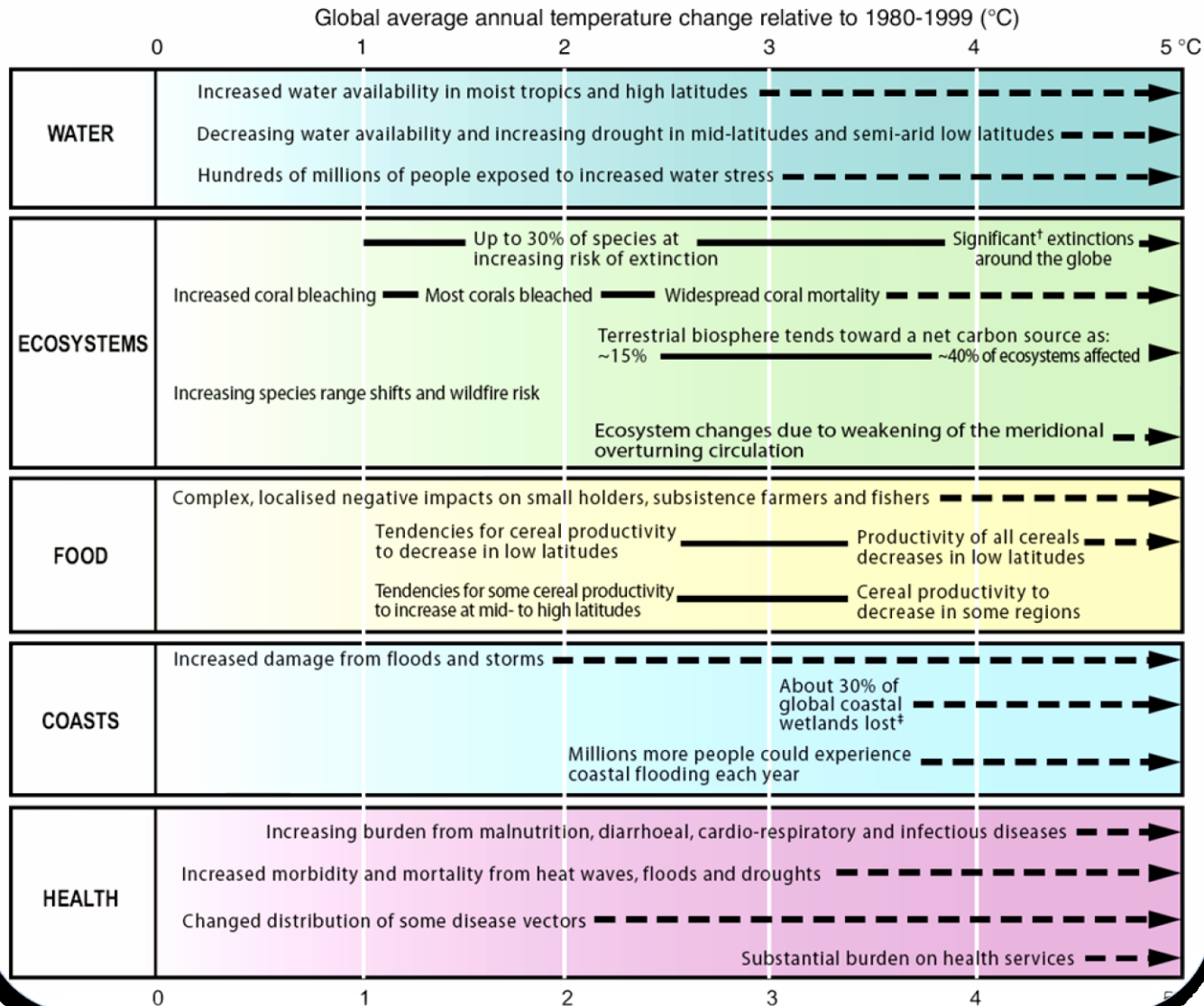
# I. Fact – The Poles are Melting RAPIDLY





# II. Expected impacts of Projected Warming

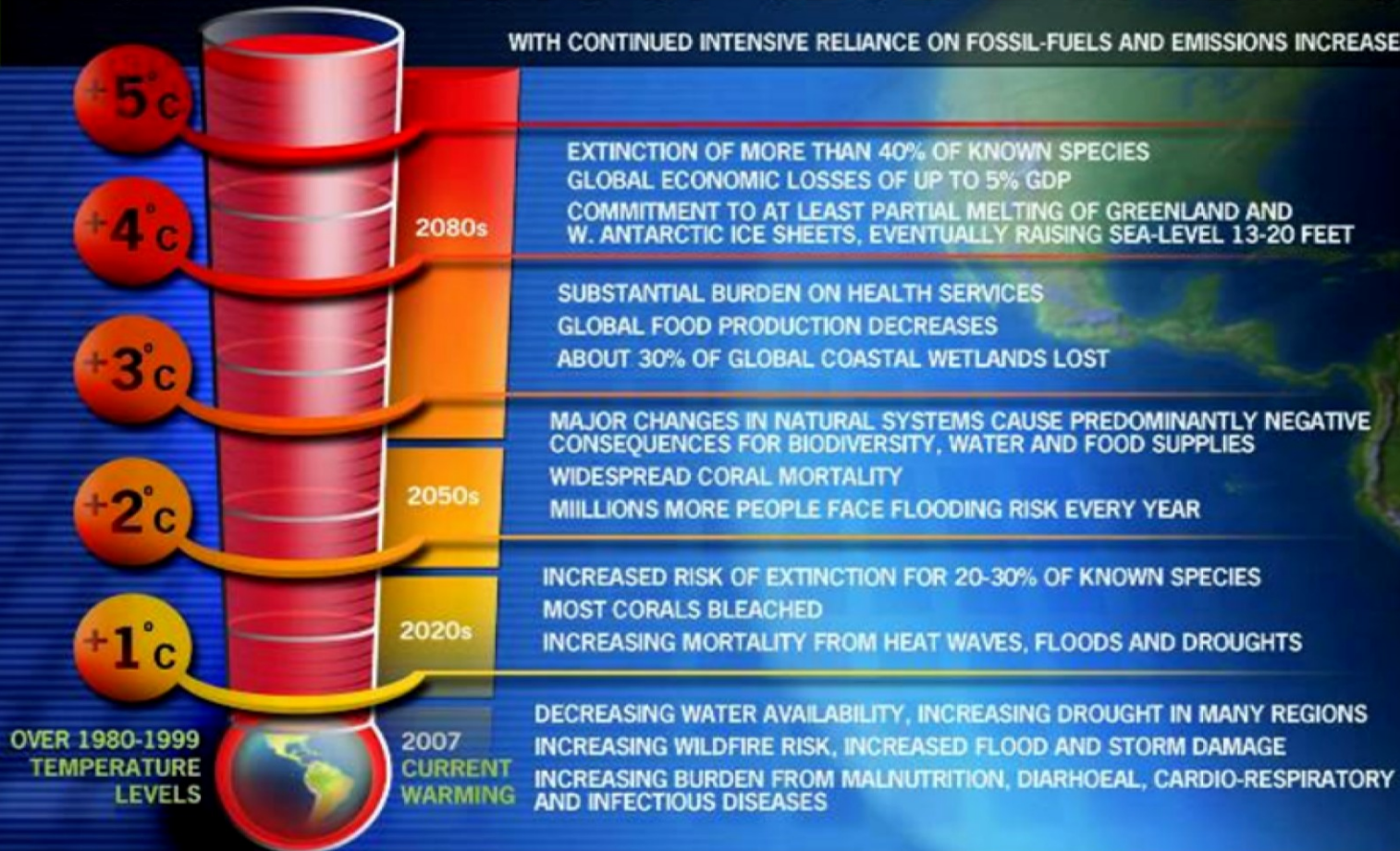
**Examples of impacts associated with global average temperature change**  
 (Impacts will vary by extent of adaptation, rate of temperature change and socio-economic pathway)




## II. Expected impacts of Projected Warming

### RISING IMPACTS OF GLOBAL WARMING

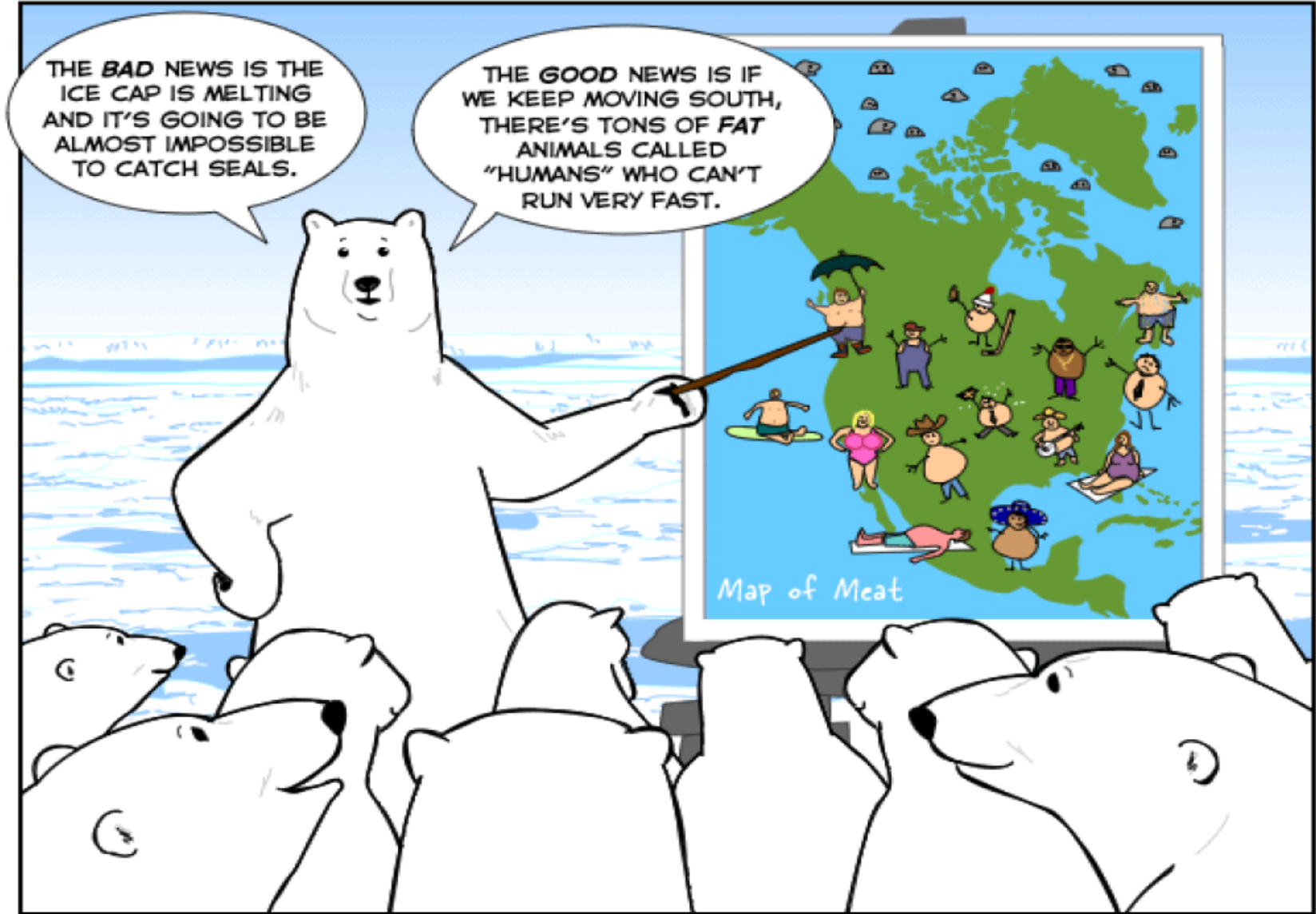
WITH CONTINUED INTENSIVE RELIANCE ON FOSSIL-FUELS AND EMISSIONS INCREASES



 **NET** www.net.org

Source: IPCC Fourth Assessment Report, Working Group II Summary for Policymakers. Timing of temperature increases based on IPCC scenarios that assume continued intensive reliance on fossil-fuels and emissions increases. Emissions reductions would reduce the amount and rate of warming.  
Conversion of temperature increases—Celsius to Fahrenheit: 1°C = 1.8°F; 2°C = 3.6°F; 3°C = 5.4°F; 4°C = 7.2°F.

Produced by National Environmental Trust.



©2007 Geek Culture

# Quiz # 15

## ➤ Question:

“IPCC” is an abbreviation  
for \_\_\_\_\_?

## ➤ Answer:

Intergovernmental Panel

on Climate Change

